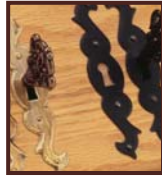


OPTIONS

- Display shelves. Bottles are tilted to show labels: \$25.00.
- Thermal glass doors with grey-coloured tint and framed in oak (see colour chart) or stainless steel. Ideal for showcasing bottles and their labels, especially when paired with display shelves (see price list. Other colours available upon request at an additional cost.)
- Compartment divider: creates two different temperature zones (one for red wine and one for white wine). Second sensor included: \$175.00. (Available on 190- and 240-bottle models).
- Grape-vine design (or logo, upon request) sandblasted on glass doors: \$280.00 for the pair.



Cover photo

240 BOTTLES

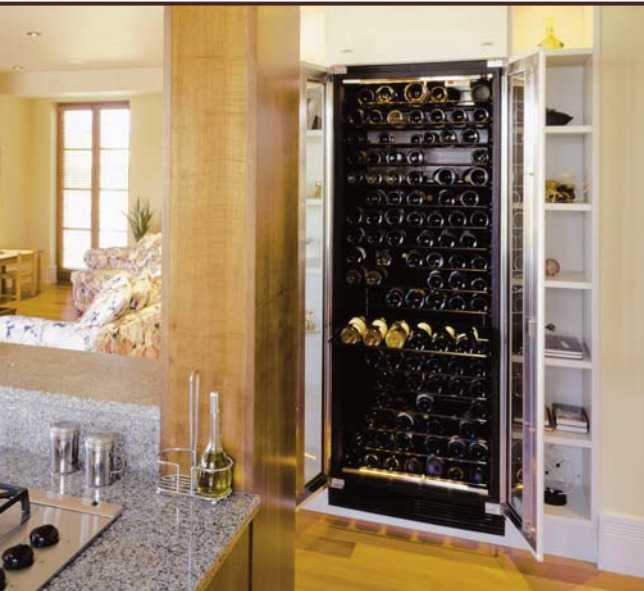
Model: 282279ECJSCP

Glass doors framed in oak
with sandblasted design.

240 BOTTLES

Model: 282279ECPVCP

Glass doors framed in oak.



View our list of distributors
www.cavavin.com

Practical cellars



BUILT-IN



info@cavavin.com | www.cavavin.com

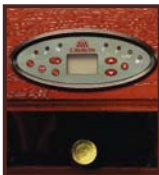

CAVAVIN®
YOUR WINE KEEPER

4575 Sir Wilfrid Laurier Boulevard
Saint-Hubert, Québec
CANADA J3Y 3X3
Tel.: 450 676 6447
Fax: 450 676 5022
Toll free: 1 877 676 6447


CAVAVIN®
YOUR WINE KEEPER

CHARACTERISTICS

- 4 models offering storage capacities of 80 to 240 bottles.
- Each can be built into any standard kitchen module (30 inches wide).
- Digital thermostat for adjusting temperature between 5°C to 17°C (built into the door).
- Interior moulded of black polystyrene.
- Switch-controlled interior lighting (the light can stay on with the doors closed). Makes serving easier—definitely a bright idea!
- Sliding black metallic shelves equipped with a safety catch and with room for two bottles (one behind the other).
- No exit required: ventilation system integrated in the bottom of the cellar.
- Equipped with two insulated panels to be mounted on cupboard doors, pivoting hinges, double roller catch with spring (doors and handles not included).
- Brushed metal casing exterior.
- Sommelier management software included.



CHOICE OF STAINS FOR OAK GLASS DOORS



Other stains available upon request at additional cost. Printing does not allow us to faithfully reproduce details and colours. You are therefore advised to verify your choice in-store.



80 BOTTLES
Model: 282234ESPICLR

2005 PRICE LIST

Dimensions in inches (width x depth x height).

	MODEL	APPROXIMATE CAPACITY	SIZE OF OPENING	PRICE	OPTIONS: MOULDED OAK WITH GLASS DOORS (2)*.	OPTIONS: STAINLESS STEEL WITH GLASS DOORS (2)*.
BUILT-IN	282234E...	80	28 3/4 x 24 x 34 3/4	\$2699.00	\$3099.00	\$3499.00
	282240E...	96	28 3/4 x 24 x 41 1/8	\$2899.00	\$3399.00	\$3799.00
	282266E...	190	28 3/4 x 24 x 66 3/8	\$3499.00	\$3899.00	\$4499.00
	282279E...	240	28 3/4 x 24 x 79 1/2	\$3799.00	\$4299.00	\$4799.00

NOTE: *Includes two doors 14 7/8 inches wide as well as accessories (mat nickel handle).

	MODEL	APPROXIMATE CAPACITY	SIZE OF OPENING	PRICE
MINI	CAV32**	32	15 1/4 x 24 x 34 3/8	\$649.00
	CAV32SS***	32	15 1/4 x 24 x 34 3/8	\$749.00
	CAV45**	45	24 x 24 x 34 3/8	\$999.00

NOTE: **Black with aluminium glass door. ***Stainless steel siding and aluminium glass door.

MINI-CELLAR CHARACTERISTICS

- 3 models, with a capacity of 32 or 45 bottles.
- Each can be built into any standard kitchen module. Cellar the size of a trash compactor (CAV32 and CAV32SS) or dishwasher (CAV45).
- Digital exterior thermostat for adjusting temperature between 5°C and 17°C.
- Black plastic interior.
- Interior lighting (either permanent or turns on when the door is opened).
- Fixed black shelves (CAV32 and CAV32SS).
- Black shelves with wood front on ball-bearing runners (CAV45).
- Exterior black textured metal (CAV32 and CAV45) or stainless steel finish (CAV32SS).
- Thermal anti-UV tinted windows with satin aluminium frame equipped with a lock.

GUARANTEE

The compressor is guaranteed for 3 years and the rest for 1 year (begins on the purchase date indicated on bill).

45 BOTTLES
Model: CAV45



32 BOTTLES
Model: CAV32SS



190 BOTTLES
Model: 282266EIPVCPN
Glass with stainless steel frame.

